

Miami-Dade County

Engineering Change Lab

June 20, 2023

Dr. Patricia Gómez,

Deputy Resilience Officer and Director of Energy

Office of Resilience in the Office of the Mayor

• A little about me...

- Finished my Ph.D. after 20 years of experience
- A long career in the public sector, 25+ years
- Teaching at a local University – adults making a career change



MIAMI-DADE COUNTY

OFFICE OF RESILIENCE

REGULATORY AND ECONOMIC RESOURCES

miamidade.gov/resilience

The Office of Resilience's mission is to lead Miami-Dade County to a resilient and sustainable future by identifying vulnerabilities, coordinating stakeholders, and facilitating innovative solutions.



ENERGY AND CLIMATE MITIGATION

ADAPTATION

COMMUNICATION

BISCAYN BAY

EXTREM HEAT

FUTUR READY

ZERO WASTE



Reduce Sources of Climate Change

Address Sea Level Rise Impacts

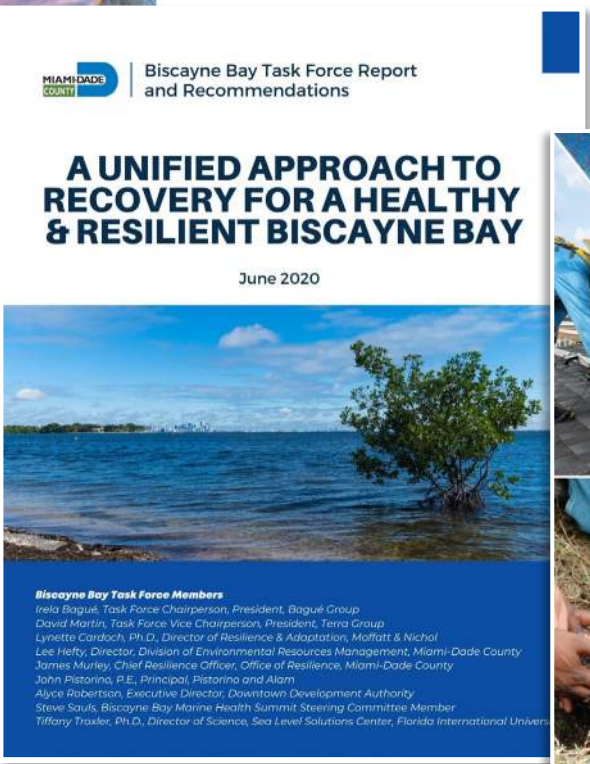
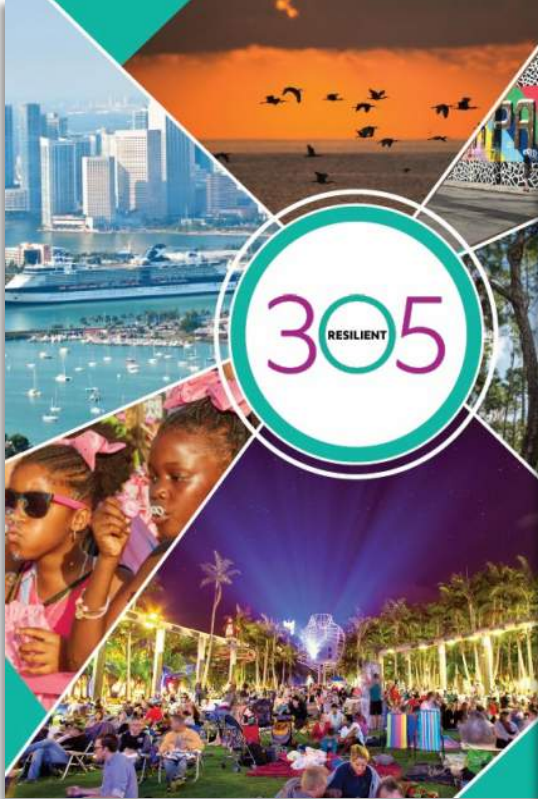
Engage & Connect Stakeholders

Protect and Restore

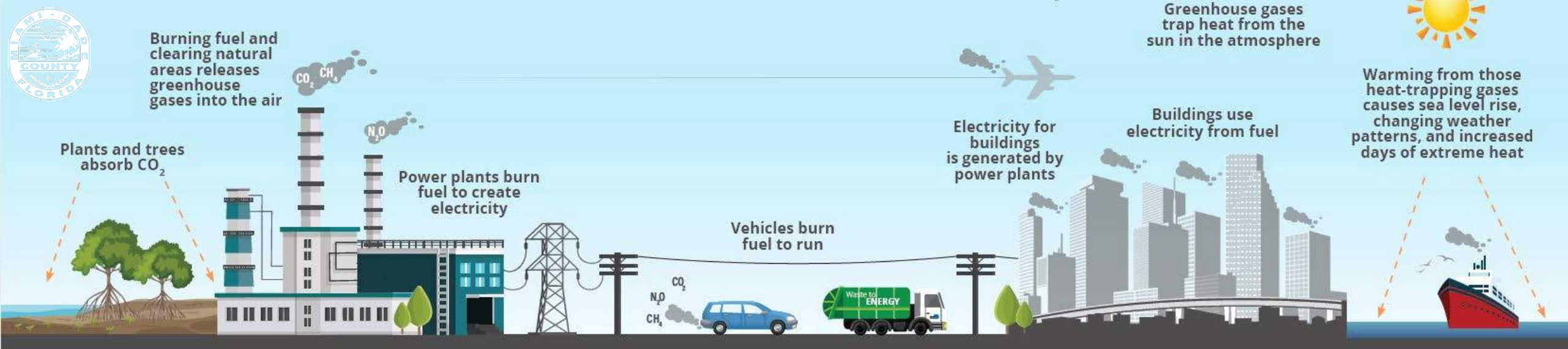
Implement Heat Risk Reduction Efforts

Resilience Implementation & Planning

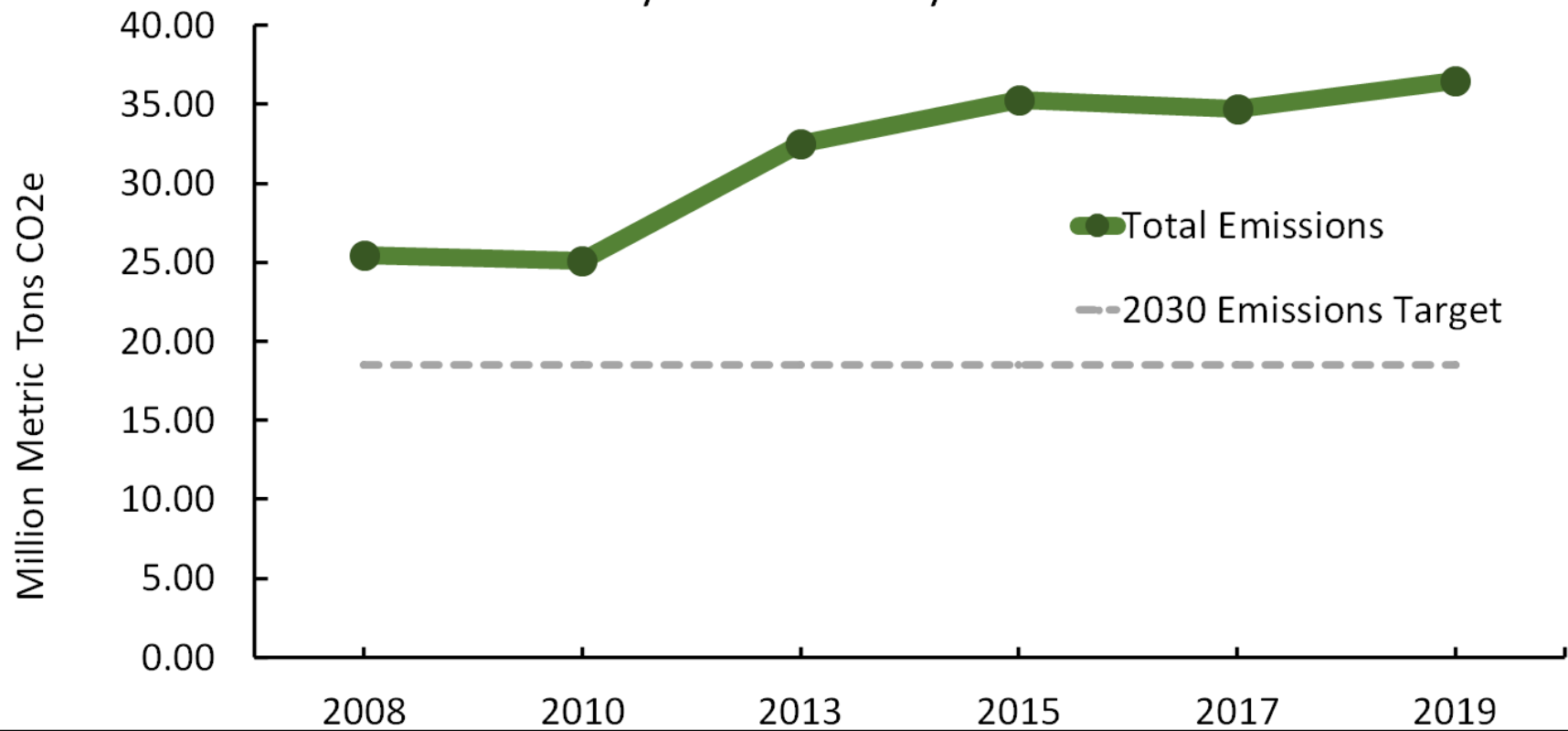
Minimize Waste & Reduce Consumption



Connected Strategies



Miami-Dade County - Community-Scale Emissions





7 Approaches to reach our goal

GETTING TO NET ZERO EMISSIONS BY 2050 7 APPROACHES TO REACH OUR GOAL



ENERGY & BUILDINGS



Benchmark, retune and retrofit existing buildings



Expand on-site and off-site renewable energy generation



Build ultra-low energy buildings



LAND USE & TRANSPORTATION



Reduce transportation-related fuel consumption



Expand and protect green and blue spaces



WATER & WASTE



Convert waste to energy



Reduce waste and water use

Engineering Background is Helpful and Important



Personal Satisfaction is Key

- I have a purpose in life, and I benefit my community.
- Influencing the future – for my kids and future generations
- Promising and rewarding
- Challenging
- Working on a multitude of projects – never have time to get bored
- My job makes me happy 😊



New skills

- Communications skills are essential
- Communication with colleagues, internal and external stakeholders, and the community in general. Need to use different strategies to achieve the same goal.
- Translate complex issues into simple terms – not easy!
- Most large complex projects benefit from an interdisciplinary team – working with other disciplines is critical



Lack of Support For Policy Adoption

- Policy adoption can happen in different environments
- Political support is important for policy adoption
- Need to learn to adapt and be flexible
- Need to identify the language to use and make connections with the priorities



Thank you!
Gracias!

Dr. Patricia Gómez
Deputy Resilience Officer
Patricia.Gomez@miamidade.gov

Sign up for our newsletter: miamidade.gov/resilience